

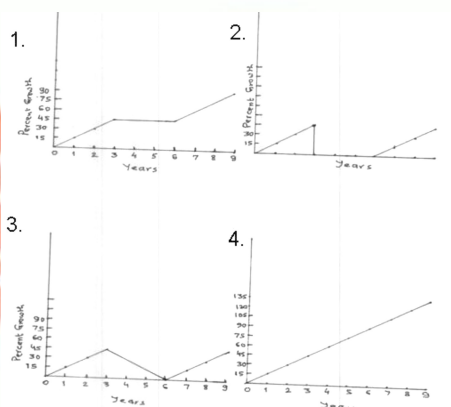
Model Paper CSIR(NET) June 2011

This Test Booklet will contain 145 (20 Part 'A' + 50 Part 'B' + 75 Part 'C') Multiple Choice Questions (MCQs). Candidates will be required to answer 15 in part 'A', 35 in Part 'B' and 25 questions in Parts 'C' respectively (No. of question to attempt may vary from exam to exam). In case any candidate answers more than 15, 35 and 25 questions in Parts A, B and C respectively only first 15, 35 and 25 questions in Parts A, B and C respectively will be evaluated. Questions in Parts 'A' and 'B' carry two marks each and Part 'C' questions carry four marks each. There will be negative marking @25% for each wrong answer. Below each question, four alternatives or responses are given. Only one of these alternatives is the 'CORRECT' answer to the question.

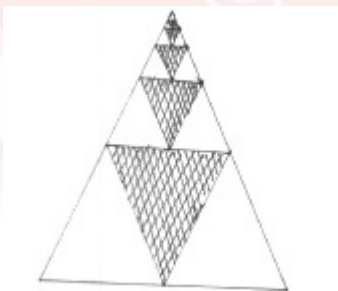
GENERAL SCIENCES PART A

ANSWER ANY 15 QUESTIONS

1. Profit of a firm grows at a rate of 15% per year for the first three consecutive years. For the next three years, the profit level remains stagnant. From the 6th year till the 9th year, it again grows at a rate of 15% per year. Which of the following graphs depicts these facts?

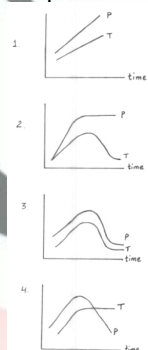


2. A pond is deepest at its centre and becomes shallow uniformly towards the edge. If the depth of water at the centre in May is half its value in August, the water contained in the pond
- (1) in May is greater than half that in August
 - (2) in August is equal to twice that in May
 - (3) in May is less than half that in August
 - (4) in August is less than twice that in May
3. The series representing the sum of the areas of the shaded equilateral triangles in the figure below is



1. $3 + 2 + 1 + 1$
 2. $\frac{1}{3} + \frac{1}{3^2} + \frac{1}{3^3} + \frac{1}{3^4} \dots$
 3. $\frac{1}{4} + \frac{1}{4^2} + \frac{1}{4^3} + \frac{1}{4^4} \dots$
 4. $\frac{1}{4} + \frac{1}{8} + \frac{1}{16} + \frac{1}{32} \dots$
4. Which of the following vitamins will not be synthesized in a person confined to a dark cell for a long time ?
1. A

2. B
 3. C
 4. D
5. Flowering in some plants is strongly influenced by the photo period. A farmer was growing two species of plants, A and B near a sea coast where a light house was located. He observed that species A flowered profusely while species B did not. Which of the following is correct ?
1. Species A requires long duration of day while species B needs a shorter day
 2. Species B requires longer duration of day while species A needs a shorter duration
 3. Both species require short duration of day
 4. Both species require long duration of day
6. Pneumatophores are modified roots in some plants like Rhizophora growing in swampy areas that come out of the ground and grow vertically upwards. The main function of such roots is to
- (1) help obtain oxygen for respiration
 - (2) provide support
 - (3) adsorb and conduct water and minerals
 - (4) store food
7. A cube of side 1 cm is painted by putting a lacquer of thickness δ , negligible compared to the side of the cube. The volume of the painted cube is approximately
- (1) $1 + \delta \text{ cm}^3$
 - (2) $1 + \delta^3 \text{ cm}^3$
 - (3) $1 + 3\delta^3 \text{ cm}^3$
 - (4) $1 + 3\delta \text{ cm}^3$
8. A candle is burning inside a sealed glass jar. The pressure and temperature of the air within the jar are plotted as a function of time. Which of the following graphs represents this process correctly?

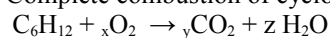


9. The result of taking 1's complement of the sum of the binary numbers 110 and 101 will be
- (1) 1011
 - (2) 0011
 - (3) 0100
 - (4) 0110
10. Which of the following straight lines passes through the point (1,1)?
- (1) $y = 2x + 3$
 - (2) $2y = x - 6$
 - (3) $x = 1$
 - (4) $x = y + 1$
11. Which of the following 1 molar (aqueous) solution has the highest number density of ions?
- (1) Glucose
 - (2) CaCl_2
 - (3) NaNO_3
 - (4) KCl

12. How many two-digit even numbers can be composed from nine digits 1, 2, 3 ...9?

- (1) 50
- (2) 81
- (3) 45
- (4) 36

13. Complete combustion of cyclohexane (C_6H_{12}) is represented by the equation



The values of x, y and z, respectively, are

- (1) 9, 6, 6
- (2) 10, 6, 4
- (3) 6, 12, 10
- (4) 4, 8, 12

14. How many distinct trichlorobenzenes ($C_6H_3Cl_3$) should exist, given that benzene (C_6H_6) has a regular hexagonal geometry?

- (1) 6
- (2) 1
- (3) 2
- (4) 3

15. Mercury is closer to the Sun than Venus. Yet Venus is hotter because it has

- (1) a dominant CO_2 atmosphere
- (2) a dominant methane atmosphere
- (3) sulphuric acid clouds
- (4) an atmosphere devoid of oxygen

16. In a simple pendulum experiment, a student records the following readings. If the true period of the pendulum is 10 s, then the percent error is the largest for the observation with serial number

Serial Number	Number of Oscillations	Time
1	10	100.2
2	20	200.3
3	50	500.5
4	100	1000.8

- (1) 1
- (2) 2
- (3) 3
- (4) 4

17. A container holding normal air (1 bar pressure, room temperature) is being evacuated. The normal composition of air is approximately 78% N_2 , 21% O_2 , 0.9% Ar and traces of CO_2 (0.04%) and water vapour (0.02%). After the pressure in the container falls to about 10^{-3} mbar, the relative fractions of the components will be

- 1. N_2 and O_2 approximately equal and greater than H_2O
- 2. N_2, O_2, Ar approximately equal and greater than H_2O
- 3. N_2, O_2, Ar in the original proportion, but N_2 less than H_2O
- 4. N_2, O_2, Ar in the original proportion, and N_2 greater than H_2O

18. An endoscope is a device for observing internal organs, using a combination of a lamp and an optical fibre. The image seen is due to

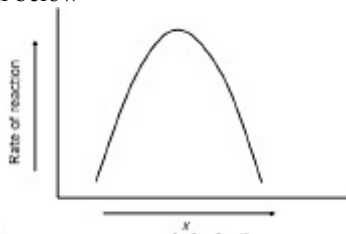
- (1) light reflected by the organ and transmitted by internal reflection through the fibre
- (2) light refracted by the organ and transmitted by refraction through the fibre.
- (3) light refracted by the organ and transmitted by internal reflection through the fibre.
- (4) light emitted by the organ and transmitted by refraction through the fibre.

19. How many times in a day is the angle between the minute and hour hands of a clock equal to an angle θ , where $0^\circ < \theta < 180^\circ$

- (1) 24

- (2) 12
- (3) 36
- (4) 48

20. A typical enzyme catalyzed reaction is shown below



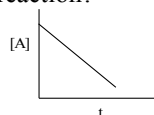
What do you think the component x might be?

1. Substrate concentration or temperature
 2. Substrate concentration or enzyme concentration
 3. Substrate concentration or pH
 4. pH or temperature
21. $[\text{CoCl}_4]^{2-}$ shows a deep blue colour because of
1. metal to ligand charge transfer transition
 2. ligand to metal charge transfer transition
 3. spin allowed and Laporte forbidden d-d transition
 4. spin allowed and Laporte allowed d-d transition
22. The violet colour of iodine vapour is due to
1. $n - \pi^*$ transition
 2. $\pi - \pi^*$ transition
 3. $n - \pi^*$ transition
 4. $\pi^* - \pi^*$ transition
23. Choose the correct statement among the following
1. diamond has lower thermal and electrical conductivities compared to graphite
 2. diamond has similar thermal and electrical conductivities compared to graphite
 3. diamond has higher thermal conductivity but lower electrical conductivity compared to graphite
 4. diamond has the same thermal but lower electrical conductivity compared to graphite
24. Which of the following is a nido-borane?
1. B_4H_{10}
 2. B_5H_9
 3. $[\text{B}_6\text{H}_6]^{2-}$
 4. B_5H_{11}
25. The oxidation number of sulphur in dithionite $[\text{S}_2\text{O}_4]^{2-}$ and dithionate $[\text{S}_2\text{O}_6]^{2-}$ are, respectively,
1. +3 and +4
 2. +3 and +5
 3. +4 and +5
 4. +4 and +6
26. Among the three types of orbitals p , d , and f ,
1. both p and f orbitals have centre of symmetry
 2. both p and d orbitals have centre of symmetry
 3. only d orbitals have centre of symmetry
 4. f orbitals alone have centre of symmetry
27. The absorbance of solution having 20% transmittance is
1. 0.301
 2. 0.699
 3. 1.301
 4. 1.699
28. The active site of enzyme nitrogenase contains
1. Mo

2. Mn
 3. Fe
 4. Cu
29. Which one of the following is a free radical:
1. CO
 2. CN^-
 3. NO
 4. CS
30. Choose the $16 e^-$ complex from the following:
1. $\text{Ni}(\text{CO})_4$
 2. $\text{Rh}(\text{PPh}_3)_3\text{Cl}$
 3. $\text{Fe}(\text{CO})_5$
 4. $(\eta^6\text{-C}_6\text{H}_6)_2\text{Cr}$
31. The species having metal-metal bond is:
1. $\text{Mn}_2(\text{CO})_{10}$
 2. $\text{Al}_2(\text{CH}_3)_6$
 3. $\text{V}_2(\text{O})_{12}$
 4. $\text{Al}_2(\text{OPr}^i)_{12}$
32. Choose the INCORRECT statement from the following
1. Fluorine has higher electronegativity than chlorine
 2. Fluorine molecule (F_2) has lower bond energy than chlorine molecule (Cl_2)
 3. Fluorine has higher electron affinity than chlorine
 4. Fluorine has a lesser tendency to form cation than chlorine
33. The only molecule having bridging oxygen is
1. Phosphorus trioxide
 2. Phosphorus pentoxide
 3. Cyclic tetraphosphate
 4. Pyrophosphate
34. The coordination number of phosphorus in $[\text{PMo}_{12}\text{O}_{40}]^{3-}$ is
1. 2
 2. 4
 3. 5
 4. 6
35. Using phenolphthalein as the indicator, which of the following titration is possible:
1. acetic acid with pyridine
 2. oxalic acid with sodium hydroxide
 3. hydrochloric acid with aniline
 4. sulphuric acid with aqueous ammonia
36. Which of the following species is ESR-active?
1. VO_2^+
 2. $\text{K}_2\text{Cr}_2\text{O}_7$
 3. KMnO_4
 4. $[\text{Co}(\text{NH}_3)_6]^{3+}$
37. Ozone (O_3) absorbs UV radiation in the atmosphere and is decomposed mainly into
1. O_2, O
 2. $\text{O}^{2-}, \text{O}^{2+}$
 3. $\text{O}_2^{2-}, \text{O}^+$
 4. atomic oxygen
38. Large deviation from Trouton's rule is observed for systems which are
1. having more ordered structure
 2. having more disordered structure
 3. having low melting points

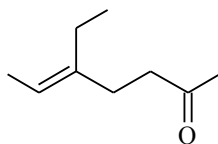
4. having low boiling points

39. The concentration of a reactant decreases linearly with time. What is the order of the reaction?

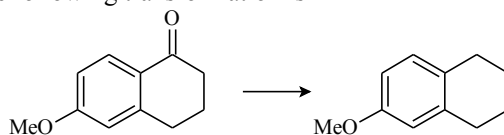


- 1st order
 - Fractional order
 - 2nd order
 - Zero order
40. The point group symmetry of the molecule cis-ML₄X₂ is
- C_{4v}
 - D_{4h}
 - C_{2h}
 - C_{2v}
41. The point group symmetries of a square and a rectangle respectively, are
- D_{4h} and D_{2h}
 - C_{4h} and C_{2h}
 - D_{4h} and C_{2h}
 - C_{4h} and D_{2h}
42. The number of rotational degrees of freedom of CO₂ is
- one
 - two
 - three
 - four
43. The magnitude of the nuclear spin angular momentum of a nuclei is $\sqrt{15/2}h$ units. The value of I is
- 5/2
 - 1/2
 - 1
 - 3/2
44. Identify the molecule whose rotational constant can not be determined by spectroscopic methods.
- CH₄
 - H₂
 - CO₂
 - HCl
45. Which of the following transitions in the electronic spectrum of a homonuclear diatomic molecule is forbidden
- $\sum_u^+ \rightarrow \sum_g^+$
 - $\sum_g^+ \rightarrow \prod_u$
 - $\sum_u^+ \rightarrow \prod_g$
 - $\sum_g^+ \rightarrow \Delta_u$
46. The diffraction pattern of a cubic solid has an intense 110 Bragg reflection, but the 100 and 111 Bragg reflections are absent. The structure of the solid is
- Body-centered cubic
 - Primitive cubic
 - Face-centered cubic
 - Edge-centered cubic
47. The logarithmic conductivity of a crystalline solid shows a linear variation with inverse temperature (1/T). The band gap may be obtained from

1. slope of the plot.
 2. intercept on the conductivity axis.
 3. intercept on the temperature axis.
 4. inverse slope
48. The molar masses of monodisperse and polydisperse polymers obey respectively the conditions: (\bar{M}_n = Number average molecular weight and \bar{M}_w = Weight average molecular weight).
1. $\bar{M}_n > \bar{M}_w$ and $\bar{M}_n < \bar{M}_w$
 2. $\bar{M}_n = \bar{M}_w$ and $\bar{M}_n < \bar{M}_w$
 3. $\bar{M}_n < \bar{M}_w$ and $\bar{M}_n < \bar{M}_w$
 4. $\bar{M}_n = \bar{M}_w$ and $\bar{M}_n = \bar{M}_w$
49. Curdling from milk, an enzyme-catalysed reaction, is most efficient around
1. 0 °C and pH \geq 10
 2. 0 °C and pH \leq 4
 3. 0 °C and 4 \leq pH \leq 10
 4. 25 °C and 4 \leq pH \leq 10
50. The spatial part of hydrogen molecular wavefunction in the simplest molecular orbital theory is given by σ_g^2 where σ_g is normalized linear combination of two hydrogen 1s orbitals. Which of the following is true about the above wavefunction?
1. It contains only covalent terms.
 2. It includes only a small amount of ionic terms.
 3. It contains only ionic terms.
 4. It overestimates the ionic terms.
51. A 2pz orbital of hydrogen atom is an eigenfunction of
1. H only.
 2. H and L^2 only
 3. H, L^2 and L_z only
 4. H, L^2 , L_z and L_x
52. By a reversible process, we mean one that always
1. takes infinite time for completion
 2. satisfies ΔS (universe) = 0
 3. satisfies $\Delta G = 0$.
 4. gives maximum work
53. A hydrogenic 3p orbital has the following form of the radial wavefunction (α i = constant):
1. $r(\alpha_1 - r)e^{-a_2 r}$
 2. $r^2 e^{-a_3 r}$
 3. $r(\alpha_4 - r)(\alpha_5 - r)e^{-a_6 r}$
 4. $r^3 e^{-a_7 r}$
54. The wavefunction $\sin^{-1} x$ is not acceptable because it is
1. not continuous
 2. not differentiable
 3. not an eigenfunction of kinetic energy operator
 4. not a single-valued function
55. IUPAC name for the compound given below is



1. *E*-5-ethylhept-5-en-2-one
 2. *Z*-5-ethylhept-5-en-2-one
 3. *E*-3-ethylhept-2-en-6-one
 4. *Z*-3-ethylhept-2-en-6-one
56. The most suitable reagent for the following transformation is

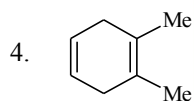
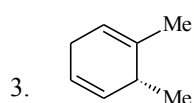
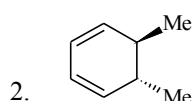
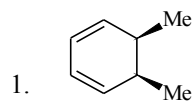
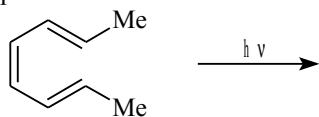


1. NaBH_4
 2. B_2H_6
 3. $\text{Zn-Hg} / \text{HCl}$
 4. $\text{NH}_2\text{NH}_2 / \text{HCl}$
57. Acetophenone can be converted to phenol by reaction with
1. *m*-CPBA followed by base catalysed hydrolysis
 2. conc. HNO_3
 3. iodine and NaOH
 4. singlet oxygen followed by base catalysed hydrolysis
58. Reaction of phenyl benzoate with an excess of methylmagnesium bromide gives a mixture of
1. triphenylmethanol and phenol
 2. 2-phenylpropan-2-ol and phenol
 3. acetophenone and toluene
 4. 2-phenylbenzoic acid and toluene
59. The major product formed in the reaction of 2-methylbut-3-en-2-ol with HBr is
- 1.
 - 2.
 - 3.
 - 4.
60. Among dimethylcyclobutanes, which one can exhibit optical activity?
1. *cis*-1,2-dimethylcyclobutane
 2. *trans*-1,2-dimethylcyclobutane
 3. *cis*-1,3-dimethylcyclobutane
 4. *trans*-1,3-dimethylcyclobutane
61. The monomer of biopolymer DNA is a
1. nucleotide
 2. amino acid
 3. disaccharide
 4. fatty acid
62. The order of chemical shifts (δ value) in the ^1H NMR spectrum of crotonaldehyde is
1. olefinic $>$ CHO $>$ Me
 2. CHO $>$ Me $>$ olefinic
 3. CHO $>$ olefinic $>$ Me
 4. olefinic $>$ Me $>$ CHO

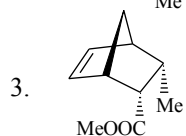
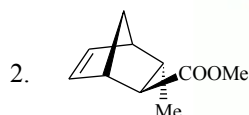
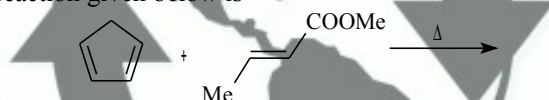
63. Natural sugars and aminoacids are predominantly

1. D-sugars and L-amino acids
2. D-sugars and D-amino acids
3. L-sugars and D-amino acids
4. L-sugars and L-amino acids

64. The product formed in the reaction given below is



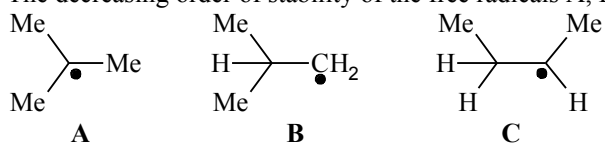
65. The major product formed in the reaction given below is



66. The conversion of excited singlet state (S1) of a molecule to triplet state (T1) is known as

1. fluorescence
2. phosphorescence
3. intersystem crossing
4. internal conversion

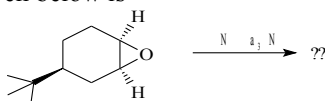
67. The decreasing order of stability of the free radicals A, B and C is



1. $A > B > C$
2. $C > A > B$
3. $B > A > C$

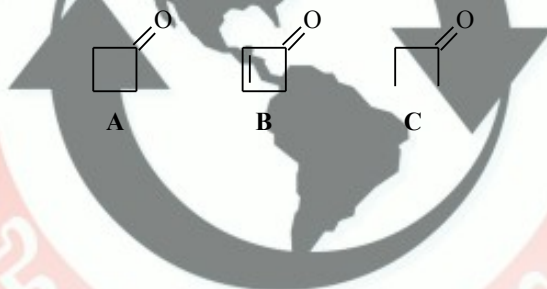
4. $A > C > B$

68. The major product formed in the reaction given below is

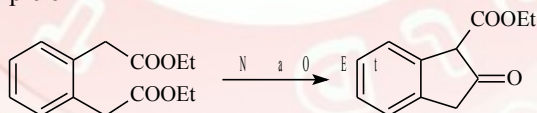


- 1.
- 2.
- 3.
- 4.

69. The rates of keto-enol tautomerism in the ketones A-C, given below, are in the order



1. $A > B > C$
 2. $A > C > B$
 3. $C > A > B$
 4. $C > B > A$
70. The reaction given below is an example of



1. aldol condensation
2. Knoevenagel condensation
3. Dieckmann condensation
4. acyloin condensation

PART C

71. The covalent radii vary gradually in the Periodic Table. From the orders given below for such radii, the correct ones are

- (a) $\text{Ce} > \text{Lu}$, (b) $\text{Co} > \text{Ti}$, (c) $\text{Sr} > \text{Ca}$, (d) $\text{I} > \text{Se}$
1. (a) and (b) only
 2. (a) and (c) only
 3. (a), (c) and (d) only
 4. (b), (c) and (d) only

72. The first ionization energy for the elements Si, P, S and Cl, follows the order

1. $\text{Si} < \text{P} < \text{S} < \text{Cl}$
2. $\text{Si} < \text{S} < \text{P} < \text{Cl}$
3. $\text{S} < \text{Si} < \text{P} < \text{Cl}$
4. $\text{S} < \text{Si} < \text{Cl} < \text{P}$

73. The pair of gaseous molecules/ions having tetrahedral structure is
1. $\text{SnCl}_4, \text{PH}_4^+$
 2. $\text{SeCl}_4, \text{XeF}_4$
 3. $\text{ICl}_4^-, \text{PH}_4^+$
 4. $\text{SnCl}_4, \text{ICl}_4^-$
74. Consider the following
- | Volumetric method for Ag(I) | Indicator used |
|------------------------------------|----------------|
| (a). Fajan method | Chromate |
| (b). Mohr's method | Fluorescein |
| (c). Vohlard method | ferric salt |
- The method and indicator matches correctly in
1. (a) and (b) only
 2. (b) and (c) only
 3. (c) only
 4. (b) only
75. An unknown lead solution has diffusion current of $1.0 \mu\text{A}$. To a 10 ml of this solution 0.5 ml of 0.04 M lead is added. The diffusion current of the spiked solution is $1.50 \mu\text{A}$. The concentration of the unknown lead solution is
1. 0.0020 M
 2. 0.0050 M
 3. 0.0035 M
 4. 0.0010 M
76. The ^{32}P radio isotope, used in leukemia therapy, has $t_{1/2} = 14.26$ days. What % of ^{32}P remains after 35 days ?
1. 30%
 2. 8%
 3. 81.7%
 4. 18.3%
77. On a 30 cm column, the t_R of A and B respectively are 16.40 and 17.63 minutes. The t_0 of the column is 1.30 minutes. The peak width at base lines for A and B are 1.11 and 1.21 minutes respectively. The column resolution R_s is
1. 1.06
 2. 1.23
 3. 2.12
 4. 2.23
78. Which one of the following pairs of electronic configurations of high-spin transition metal ions (3d) in an octahedral field undergoes a substantial Jahn-Teller distortion:
1. d^3, d^9
 2. d^4, d^9
 3. d^5, d^9
 4. d^6, d^9
79. Which one of the following pairs consists of a good oxidizing and a good reducing agent respectively:
1. Ce(IV), Ln(III)
 2. Ln(III), Eu(II)
 3. Ce(IV), Eu(II)
 4. Ln(III), Ce(III)
80. Which one of the pairs of following statements about reduction of $[\text{CoCl}(\text{NH}_3)_5]^{2+}$ by Cr(II) is correct:
- (A). Reactant $[\text{CoCl}(\text{NH}_3)_5]^{2+}$ has non-labile coordination sphere
 - (B). Reaction proceeds by outer-sphere mechanism
 - (C). Reactant $[\text{CoCl}(\text{NH}_3)_5]^{2+}$ has labile coordination sphere
 - (D). Reaction proceeds by inner-sphere mechanism
1. (A) and (B)
 2. (A) and (D)
 3. (C) and (B)
 4. (C) and (D)
81. Hemocyanin contains

1. a dinuclear copper core and binds dioxygen in the cuprous state.
 2. a dinuclear copper core and binds dioxygen in the cupric state.
 3. a mononuclear copper core and binds dioxygen in the cuprous state
 4. a mononuclear copper core and binds dioxygen in the cupric state.
82. The ^31P NMR spectrum of $\text{PF}_4\text{N}(\text{CH}_3)_2$ at room temperature and low temperature (173 K) respectively shows (assume that N and H do not couple):
1. triplet and quintet
 2. quintet and triplet
 3. quintet and triplet of triplets
 4. triplet and triplet of triplets
83. The number of hyperfine lines in the EPR spectrum of a one electron reduced product of $[\text{Co}_3(\text{CO})_9\text{Se}]$ ($I = 7/2$ for Co nucleus) is:
1. 8
 2. 15
 3. 22
 4. 1
84. The highest oxidation state of a metal in the following compounds is : ($\eta^6\text{-C}_6\text{H}_6$) $_2\text{Cr}$, $\text{Mn}(\text{CO})_5\text{Cl}$, $\text{Na}_2[\text{Fe}(\text{CO})_4]$, $\text{K}[\text{Mn}(\text{CO})_5]$ and $\text{K}[\text{Mo}(\text{CO})_5\text{Br}]$
1. 1
 2. 2
 3. -1
 4. -2
85. The maximum number of valence electrons of a metal in these complexes are: $\text{Mn}_2(\text{CO})_{10}$, ($\eta^5\text{-C}_5\text{H}_5$) $\text{Mo}(\text{CO})_3\text{Cl}$, ($\eta^5\text{-C}_5\text{H}_5$) Ni , and ($\eta^5\text{-C}_5\text{H}_5$) $_2\text{TiCl}_2$
1. 16
 2. 18
 3. 20
 4. 22
86. The number of bridging and terminal carbonyls present in $\text{Co}_4(\text{CO})_{12}$ at low temperature are respectively:
1. 3 and 9
 2. 4 and 8
 3. 6 and 6
 4. 0 and 12
87. Olefin hydrogenation using Wilkinson's catalyst initiates with:
1. olefin addition to $\text{Rh}(\text{PPh}_3)_2\text{Cl}$
 2. olefin addition to $\text{Rh}(\text{PPh}_3)_3\text{Cl}$
 3. a phosphine dissociation from $\text{Rh}(\text{PPh}_3)_3\text{Cl}$
 4. a phosphine addition to $\text{Rh}(\text{PPh}_3)_2\text{Cl}$
88. Although Fe(III) is a better Lewis acid compared to Zn(II), most hydrolytic enzymes contain Zn(II) at the active site because
1. Fe(III) is a redox active ion.
 2. Fe(III) has less abundance compared to Zn(II).
 3. Fe(III) generally makes octahedral complexes while Zn(II) makes tetrahedral complexes
 4. Zn(II) makes kinetically labile complexes.
89. Considering the two complexes (A) $[\text{Ni}(\text{H}_2\text{O})_6]^{2+}$ and (B) $[\text{Ni}(\text{NH}_3)_6]^{2+}$, the right statement is
1. Complex (A) is diamagnetic and complex (B) is paramagnetic
 2. Complex (A) is paramagnetic and complex (B) is diamagnetic
 3. Both are paramagnetic
 4. Both are diamagnetic
90. Unlike d-d transitions, the f-f transitions
1. do not change much with change in ligand
 2. change significantly with change in ligand
 3. appear at low energies i.e., at the near-IR region
 4. appear as broad bands

91. The solvent that will enhance electrical conductivity of N_2O_4 considerably is
1. hexane
 2. benzene
 3. nitromethane
 4. carbon tetrachloride
92. The major product obtained by the reaction of PCl_5 with NH_3 , NH_4Cl and $(\text{NH}_4)_2\text{SO}_4$ respectively are
1. $(\text{PNCl}_2)_n$, $\text{P}(\text{NH}_2)_4\text{Cl}$ and $\text{Cl}_3\text{P} = \text{NPOCl}_2$
 2. $\text{P}(\text{NH}_2)_4\text{Cl}$, $(\text{PNCl}_2)_n$ and $\text{Cl}_3\text{P} = \text{NPOCl}_2$
 3. $\text{Cl}_3\text{P} = \text{NPOCl}_2$, $(\text{PNCl}_2)_n$ and $\text{P}(\text{NH}_2)_4\text{Cl}$
 4. $(\text{PNCl}_2)_n$ only
93. Strongest superacid among the following is a
1. solution of HNO_3 in H_2SO_4
 2. solution of HClO_4 in H_2SO_4
 3. solution of SbF_5 in HF
 4. solution of SbCl_5 in HCl
94. Consider the following statements regarding borazine,
- A. It is isoelectronic with benzene
 - B. Each nitrogen receives more σ -electron density from neighbouring boron than it gives away as a π -donor
 - C. It does not undergo addition reactions
 - D. Nitrogen retains its basicity and boron its acidity.
- The true statements among the above are
1. A, C and D
 2. A, B and D
 3. A and C only
 4. B, C, and D
95. Which of the following has linear shape
1. $\text{H}_3\text{C}-\text{N}=\text{C}=\text{S}$
 2. $\text{H}_3\text{Si}-\text{N}=\text{C}=\text{S}$
 3. $\text{H}_3\text{C}-\text{N}=\text{C}=\text{O}$
 4. $\text{H}_3\text{C}-\text{O}-\text{CH}_3$
96. For a diffusion-controlled bimolecular reaction, the rate constant (kD) is proportional to (T = temperature; η = coefficient of viscosity of medium).
1. ηT
 2. $\frac{1}{\eta T}$
 3. $\frac{T}{\sqrt{\eta}}$
 4. $\frac{T}{\eta}$
97. Consider the unimolecular reaction
 $\text{A}(\text{g}) \rightarrow \text{products}$
for which the following remarks were made.
- A. The reaction is second order at low pressure and becomes first order at high pressure.
 - B. The reaction is first order at low pressure and becomes second order at high pressure.
 - C. The reaction is zero order
- Which of these is correct?
1. A and B
 2. B and C
 3. Only C
 4. only A

98. A random distribution of errors obeys the Gaussian form $\sqrt{A/\pi} \exp[-Ax^2]$. The mean and standard deviation of this distribution obeys
1. $\langle x \rangle = 0$ and $\sigma_x = 1/\sqrt{A}$
 2. $\langle x \rangle \neq 0$ and $\sigma_x = 1/\sqrt{A} + 1$
 3. $\langle x \rangle = 0$ and $\sigma_x = \sqrt{A}$
 4. $\langle x \rangle = 0$ and $\sigma_x = A$

99. The function $\sin^{-1} x$ is not an acceptable wave function because
1. it is not differentiable
 2. its first derivative is not continuous
 3. it does not cover the entire space
 4. it is not a single-valued function

100. The following is true of $2p_x$, $2p_y$ and $2p_z$ orbitals of a H atom.
1. All are eigen functions of L_z
 2. Only $2p_x$ and $2p_z$ orbitals are eigen functions of L_z
 3. Only $2p_y$ orbital is an eigen function of L_z
 4. Only $2p_z$ orbital is an eigen function of L_z

101. Given two Hermitian operators A and B, we construct the following four additional operators

$$AB, ABA, i[A, B], A^2B.$$

Choose the correct option from below.

1. All these 4 operators are Hermitian
 2. Only 3 of these operators are Hermitian
 3. Only 2 of these operators are Hermitian
 4. Only 1 of these operators is Hermitian
102. The first-order correction to energy for the ground state of a particle-in-a-box due to a perturbation λx would be
1. λL^2
 2. λL
 3. $2 \lambda L$
 4. 2

103. Characters of a few symmetry operations are given below. Identify the character of the irreducible representation $A_2'_{2g}$

	E	C_2	C_4	σ_h	σ_d
1	1	1	1	+	-
2	1	1	-1	1	1
3	1	-1	-1	1	1
4	1	1	-1	1	+

104. The character of the irreducible representation A_1 in C_{3v} point group is given below

	E	$2C_3$	$3\sigma_v$
A_1	1	1	1

Identify one irreducible representation orthogonal to A_1 among the following.

	E	$2C_3$	$3\sigma_v$
Γ_1	1	-1	1
Γ_2	2	-1	0
Γ_3	2	0	-1
Γ_4	1	-1	-1

1. Γ_1
 2. Γ_2
 3. Γ_3
 4. Γ_4
105. The energy levels of cyclopropene are $\alpha + 2\beta$, $\alpha - \beta$, and $\alpha - \beta$. The delocalization energy in $C_3H_3^-$ is
1. 2β

2. 0
3. β
4. 3β

106. The rotational constant (B) of H^{35}Cl , H^{37}Cl and D^{35}Cl follow the order

1. $\text{H}^{35}\text{Cl} > \text{D}^{35}\text{Cl} > \text{H}^{37}\text{Cl}$
2. $\text{H}^{35}\text{Cl} > \text{H}^{37}\text{Cl} > \text{D}^{35}\text{Cl}$
3. $\text{D}^{35}\text{Cl} > \text{H}^{35}\text{Cl} > \text{H}^{37}\text{Cl}$
4. $\text{H}^{37}\text{Cl} > \text{H}^{35}\text{Cl} > \text{D}^{35}\text{Cl}$

107. Observe the following statements

- I. Atomic mass of isotopes can be obtained from rotational spectra
- II. The separation between two successive rotational spectral lines of gaseous NO is $2B \text{ cm}^{-1}$
- III. The nmr spectrum of a compound gave a singlet at 300 Hz away from TMS

operating at 60 MHz . Its chemical shift is 3 ppm .

using a nmr spectrometer

Which of the following is correct?

1. I, II and III are correct.
2. Only III is correct.
3. I and II are correct.
4. Only I is correct.

108. In a crystal, atom A is at the corners of the unit cell, B is at the centre of the cell and the oxygen atoms are at the face-centred positions. What is the formula per unit cell?

1. A_8BO_6
2. ABO_6
3. A_8BO_3
4. ABO_3

109. On mixing 100 mL of $0.1 \text{ M CH}_3\text{COOH}$ and 50 mL of 0.1 M NaOH , the pH of the solution will be

1. $\text{p}K_a + 0.301$
2. $\text{p}K_a$
3. $\text{p}K_a - 0.301$
4. $\text{p}K_a + 0.477$

110. Using the fundamental equation $dA = -SdT - PdV$, the Maxwell relation is

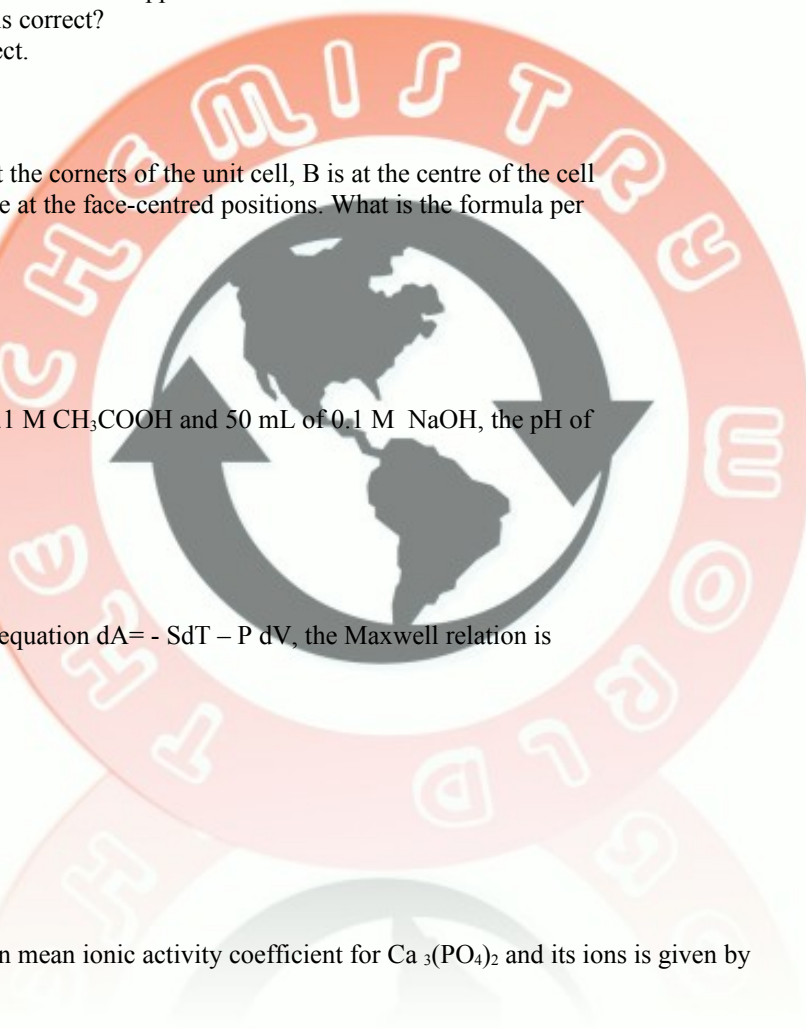
1. $\left(\frac{\partial S}{\partial P}\right)_T = \left(\frac{\partial V}{\partial S}\right)_P$
2. $\left(\frac{\partial S}{\partial V}\right)_P = \left(\frac{\partial P}{\partial T}\right)_V$
3. $\left(\frac{\partial T}{\partial V}\right)_S = \left(\frac{\partial P}{\partial S}\right)_T$
4. $\left(\frac{\partial S}{\partial V}\right)_T = \left(\frac{\partial P}{\partial T}\right)_V$

111. The relationship between mean ionic activity coefficient for $\text{Ca}_3(\text{PO}_4)_2$ and its ions is given by

1. $\gamma_{\pm} = \gamma_{\text{Ca}^{2+}}^3 \gamma_{\text{PO}_4^{3-}}^2$
2. $\gamma_{\pm} = \gamma_{\text{Ca}^{2+}}^2 \gamma_{\text{PO}_4^{3-}}^3$
3. $\gamma_{\pm} = \gamma_{\text{Ca}^{2+}}^3 \gamma_{\text{PO}_4^{3-}}^2$
4. $\gamma_{\pm} = \gamma_{\text{Ca}^{2+}}^3 \gamma_{\text{PO}_4^{3-}}^2$

112. Assuming that C-H and C-X bond lengths in $\text{X}-\text{C}_6\text{H}_4-\text{X}$ are nearly equal, are nearly equal, the molar residual entropy at 0 K is

1. 0
2. $R \ln 2$
3. $R \ln 3$
4. $R \ln 6$



113. The contributions to the molar entropy by translational (tr), rotational (rot), vibrational (vib) and electronic (ele) degrees of freedom is in order

1. tr > rot > vib > ele
2. rot > vib > tr > ele
3. ele > vib > rot > tr
4. vib > rot > tr > ele

114. A binary mixture of A₂ and B₂ will show negative deviation from Raoult's law when

1. A–A and B–B interactions are stronger than A–B
2. A–A and B–B interactions are weaker than A–B
3. Both A–A and B–B interactions are equal to A–B
4. Either A–A or B–B interactions is equal to A–B

115. In the presence of external magnetic field the transition $^3D_1 \rightarrow ^3P_1$ splits into

1. 3
2. 5
3. 7
4. 9

116. The term symbol for the ground state of rhodium (Rh, atomic number 45) is $4F$.

The electronic configuration for this term symbol is

1. [Kr] $4d^7 5s^2$
2. [Kr] $4d^8 5s^1$
3. [Kr] $4d^9 5s^0$
4. [Kr] $4d^7 5s^1 5p^1$

117. Ionic equivalent conductance value for Ca^{2+} is $0.0119 (S m^2 mol^{-1})$ and for Cl^- is $0.0076 (S m^2 mol^{-1})$. The correct expected molar conductivity at infinite dilution for $CaCl_2$ is

1. $0.0195 S m^2 mol^{-1}$
2. $0.0271 S m^2 mol^{-1}$
3. $0.0542 S m^2 mol^{-1}$
4. $0.01355 S m^2 mol^{-1}$

118. Find correct pair for ionic strengths of (a) a 0.02 molal solution of KCl and (b) a 0.02 molal solution of K_2SO_4 .

1. (a) $0.020 mol Kg^{-1}$ (b) $0.020 mol Kg^{-1}$
2. (a) $0.020 mol Kg^{-1}$ (b) $0.060 mol Kg^{-1}$
3. (a) $0.020 mol Kg^{-1}$ (b) $0.050 mol Kg^{-1}$
4. (a) $0.020 mol Kg^{-1}$ (b) $0.030 mol Kg^{-1}$

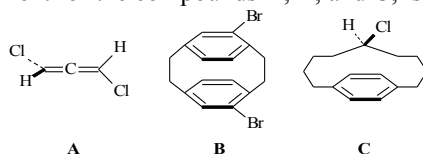
119. The term symbol for the ground state configuration of NO is

1. $^2\Pi_u$
2. $^2\Pi_g$
3. $^1\Pi_1$
4. $^1\Pi_g$

120. The kinetic chain length (ν) is a measure of chain propagation. If the rates of consumption are denoted by R_c and rates of production by R_p ; M and M' denote the monomer and the active center, respectively. The correct definition of ν is

1. $R_c(M) / R_p(M')$
2. $R_p(M') / R_c(M)$
3. $R_c(M') / R_p(M)$
4. $R_c(M) / R_c(M')$

121. Amongst the following the correct statement for the compounds A, B, and C, is



1. A and B are achiral and C is chiral
2. A is chiral and B and C are achiral
3. A and B are chiral and C is achiral

4. A is achiral and B and C are chiral

122. 4-tert-Butylcyclohexanone on reduction gives two isomeric alcohols which are

1. Enantiomers
2. Diastereomers
3. Rotamers
4. Homomers

123. For the following compounds A and B the correct statement is

1. A is aromatic and B is antiaromatic
2. A is antiaromatic and B is non-aromatic
3. A and B are both aromatic
4. A and B are both non-aromatic

124. Identify the product formed in the following transformations

125. Identify the product formed in the following sequence of reactions

126. Identify the products A and B in the following reaction sequence

127. Match the following:

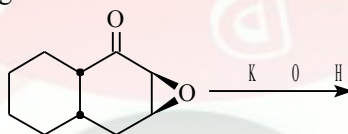
- | | |
|--------------------------------------------------|-----------------------|
| A. Conversion of 1,7-octadiene to cyclohexene | i) Wacker Oxidation |
| B. Conversion of bromobenzene to ethyl cinnamate | ii) McMurry Coupling |
| C. Conversion of 1-hexene to 2-hexanone | iii) Heck reaction |
| | iv) Olefin Metathesis |

1. A: iv; B: ii; C: iii
2. A: ii; B: iv; C: i
3. A: iv; B: iii; C: i
4. A: i; B: iii; C: iv

128. Reagents that can be used in the following conversion are

1. i) $\text{Ph}_3\text{P}=\text{CH}_2$, ii) HCN , iii) H_3O^+
2. i) $\text{HS}(\text{CH}_2)_2\text{SH}$, ii) $n\text{-BuLi}$, iii) BrCH_2COOH
3. i) EtMgI , ii) KMnO_4
4. i) Ph_3P , CBr_4 , ii) $n\text{-BuLi}$, iii) CO_2

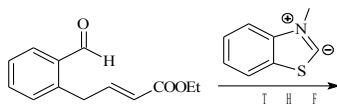
129. The major product formed in the following reaction is



- 1.
- 2.
- 3.
- 4.

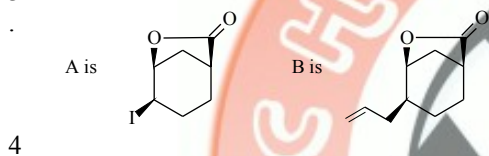
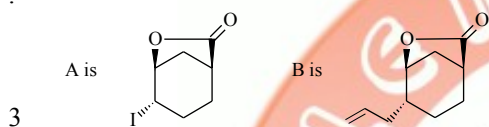
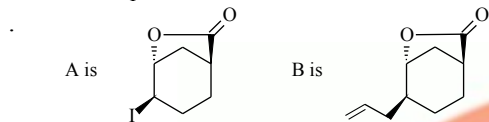
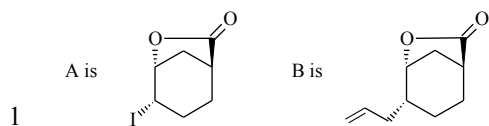
4

130. In the following reaction, the structure of the major product is

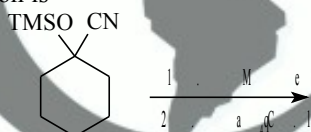


131. For the following reaction, the structure of the major product is

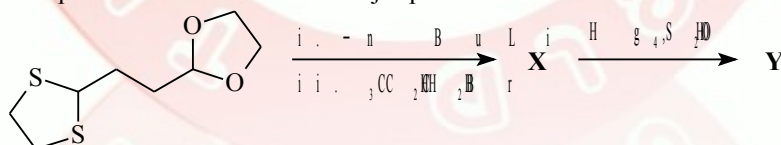
132. Identify the products A and B in the following reaction sequence.



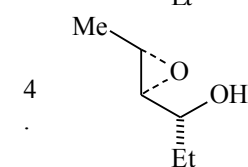
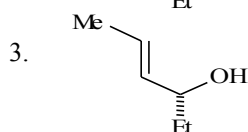
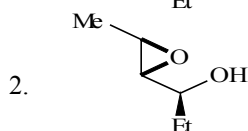
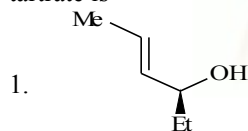
133. Major product formed in the following reaction is



134. In the following reaction sequence the structure of the major products X and Y are

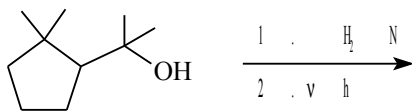


135. Product of Sharpless kinetic resolution of the following alcohol with (-)-diethyl tartrate is



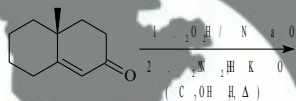
136. Select the product of the reaction of (Z)-(2-methoxyvinyl)benzene with dichloroacetyl chloride in presence of triethyl amine.

137. Identify the product formed in the following reaction



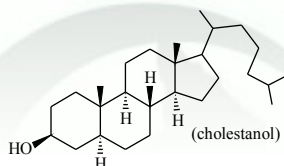
- 1.
- 2.
- 3.
- 4.

138. The compound formed in the following reaction sequence is



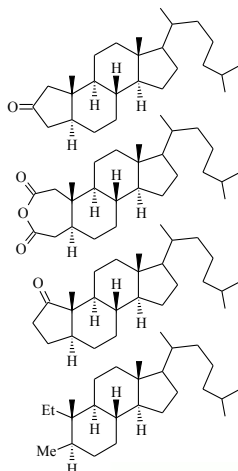
- 1.
- 2.
- 3.
- 4.

139. Cholestanol on oxidation with chromium trioxide in acetic acid/pyridine gives a dicarboxylic acid, which on pyrolysis in the presence of a catalytic amount of barium hydroxide gives compound A as the major product. The structure of A is



- 1.
- 2.
- 3.

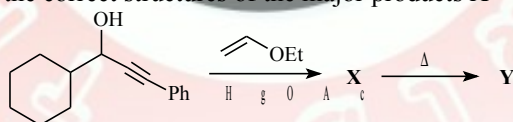
4.



140. Photolysis of 1,4-dimethyl-1,3-cyclohexadiene in presence of excess oxygen and catalytic amount of Rose Bengal followed by reduction with H_2/Pt provides

- 1.
- 2.
- 3.
- 4.

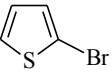
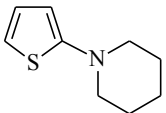
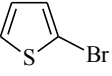
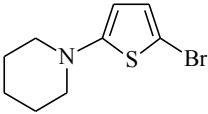
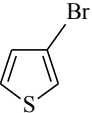
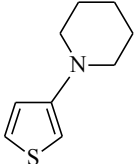
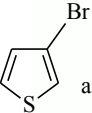
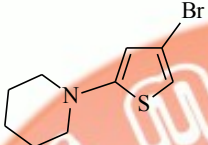
141. In the following reaction sequence, the correct structures of the major products X and Y are



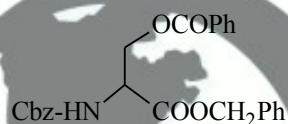
1. X is and Y is
2. X is and Y is
3. X is and Y is
4. X is and Y is

142. Structure of the X and Y in the reaction sequence of thiophene given below are



1. X is  and Y is 
2. X is  and Y is 
3. X is  and Y is 
4. X is  and Y is 

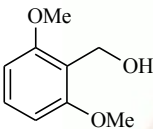
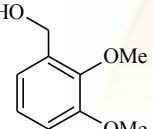
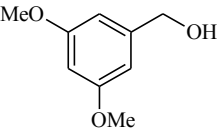
143. Identify the product of hydrogenation (H_2 , Pd/C) of the protected amino acid given below



144. In the broad band decoupled ^{13}C NMR spectrum, the number of signals appear for (a) catechol, (b) resorcinol and (c) hydroquinone, respectively, are

1. six, four and two
2. six, six and four
3. three, four and four
4. three, four and two

145. In the proton NMR spectrum, an organic compound exhibited the following spectral data δ 7.2 (1H, dd, $J = 8$ and 1.5 Hz), 6.8 (1H, d, $J = 1.5$ Hz), 6.7 (1H, d, $J = 8$ Hz), 4.9 (2H, s), 3.9 (3H, s), 3.85 (3H, s), 3.5 (1H, br s, exchangeable with D_2O)
The compound among the choices given below is

1. 
2. 
3. 
4. 